



HAFNER

HAFNER PNEUMATIK

EXCELLENCE IN PNEUMATICS

Benefit from a strong team

As your trusted partner in pneumatic valves, we guide you confidently through your projects, providing tailored valve solutions designed to perform reliably in even the toughest environments.

01 HAFNER PNEUMATIK

YOUR PARTNER FOR INNOVATIVE VALVE SOLUTIONS
HAFNER IN NUMBERS
YOUR SUCCESS IS OUR DRIVE
ENVIRONMENTAL, SOCIAL AND GOVERNANCE
A CASE STUDY – CUSTOMIZED VALVE SOLUTIONS

CONTENTS

02 INDUSTRIES

MACHINE ENGINEERING AND INDUSTRIAL AUTOMATION
PROCESS VALVE AUTOMATION
COMMERCIAL VEHICLES
RAIL VEHICLES
OFFSHORE/MARINE
PULP AND PAPER INDUSTRY

CONTACT

03

YOUR PARTNER FOR INNOVATIVE VALVE SOLUTIONS

30 years of excellence in pneumatics

For over three decades, HAFNER Pneumatik has been a leader in quality and innovation, supporting partners across a range of industries including industrial automation, process valve automation, railway, commercial vehicles, pulp and paper, and various other sectors. Starting manufacturing pneumatic control valves in 1993, today our operations include a production facility in Hungary spanning around 2,300 m² and an international sales office in Germany. We serve distributors and customers in more than 50 countries worldwide.

Your success is our drive

Our customers are at the heart of everything we do. We focus on providing expert advice and tailored solutions to meet your specific requirements. As a mid-sized company, we offer an extensive catalogue of products and specialize in developing custom valve solutions. Our modular product range ensures high flexibility, allowing us to efficiently fulfill orders for customized valves, even for small and medium quantities. We prioritize fast development and delivery times to ensure your projects are completed swiftly and efficiently.

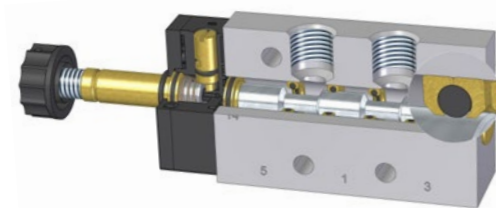
Distinct advantages

Our valves provide distinct advantages through high-quality materials and a unique sealing system. HAFNER's »swimming O-Ring« sealing concept ensures low friction by:

- Preventing seal deformation during assembly for independent movement
- Eliminating contact pressure without air pressure
- Exposing only three of five seals to pressure in a 5/2 valve, minimizing friction

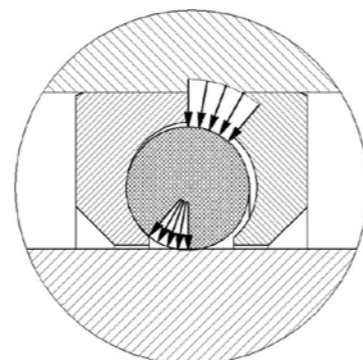
Benefits include

- High durability and extended lifetime
- High flow in a compact design
- High reliability
- Low minimum pressure



HAFNER's »swimming O-Ring« sealing concept

Without pressure, no friction is applied to the seal, resulting in a longer lifespan.



Moving forward together

HAFNER Pneumatik stands for 30+ years of experience, innovation, and quality in pneumatics. Our valves guarantee reliable and efficient solutions across various industries, both today and in the future. Trust our expertise and let us make your projects successful together.

HAFNER IN NUMBERS

Represented in more than
Countries

50

Foundation

1991

2.300
m²

Production area

11

CNC Machines

Integrated COBOTS

6

26%

of our energy requirements are
generated by our solar panels.

More than
400.000

valves produced annually

8

ESG INDEX

The HAFNER Team
consists of

100

Pneumatic enthusiasts

Number of valves
in catalogue

over
2.500

Percentage of employees
who have been part of the
HAFNER team for more
than 10 years.

35%

YOUR SUCCESS IS OUR DRIVE

Our commitment to your success is at the heart of everything we do. We believe that the strong partnership between our customers and our German-Hungarian Team – driven by our HAFNER Team Spirit – creates the foundation for exceptional results.

We are committed to developing valves that are not only high-quality but also precisely tailored to your unique requirements. We understand that every business has specific challenges, and that's why we put great emphasis on innovation and customization.

We also prioritize Environmental, Social, and Governance (ESG) responsibilities, ensuring that our business practices contribute positively to the community and the environment.

Together, we create solutions that foster your business success

Comprehensive Valve Range

We offer a complete selection of high-quality valves designed to meet diverse application needs.

Customized Valve Solutions

Our expertise allows us to develop tailored solutions that precisely address your unique challenges.

Support for CO₂ Neutrality

We are dedicated to helping you achieve your sustainability goals by providing innovative solutions that support your journey to carbon neutrality.

Rapid Response to Inquiries

We understand that time is critical. Our team ensures quick and efficient handling of your requests.

Swift Product Development

With our short communication channels and lean processes, we can rapidly bring new products to market, keeping you ahead of the competition.

Fast Delivery Times

We pride ourselves on our ability to deliver products promptly, ensuring that your operations run smoothly.

High-Quality Products

Our rigorous quality control measures guarantee that every product we deliver meets the highest standards of excellence.

Joint Development Process

Through collaborative development with our customers, we combine our

expertise with yours to create the ideal solutions for your application. By working together, we ensure the successful execution of projects, leveraging synergies to deliver innovative solutions efficiently.

Our aim is to be more than just a supplier – we are your dedicated partner for success. Let us help you drive your business forward with innovative valve solutions made by HAFNER.

ENVIRONMENTAL, SOCIAL AND GOVERNANCE

We are committed to implementing techniques aligned with ESG principles to reduce greenhouse gas emissions from our operations and preserve environmental values. We strive to set an example, positively impacting the societal groups within our immediate environment and enhancing the well-being of our employees. Our company has achieved an ESG index of 8 based on the Global Reporting Initiative (GRI) framework questionnaire. We use this index as a guideline to set new goals focused on improving sustainability-related issues, helping us make progress in these areas.



Environmental

Waste Management

We follow strict selective waste collection, aiming to minimize hazardous waste despite its unavoidable use.

Energy Consumption

In 2024, 26% of the company's electricity was produced by our own solar panel system. We also recycle water back into the production process.

Circular Economy

Efforts are made to reuse paper and plastic packaging, reducing waste and supporting circular economy practices.

Biodiversity

73% of the site is green space, featuring insect hotels and bird feeders to protect and support the local environment.



Social

Ethic and Equality

HAFNER is dedicated to human rights and labour rights, promoting equality and non-discrimination based on race, gender, age, religion, political beliefs, or other statuses. The company ensures equal pay for men and women in the same positions.

Social Responsibility

The company supports the broader social environment through sponsorships of local associations and foundations, maintaining close relationships with educational institutions, and participating in public interest activities.

Talent Management

Employees have access to professional, language, and internal training courses. The company also facilitates practical training for students through dual education and offers specialized pneumatic training with its self-developed Pneumatic Training Equipment.



Governance

Exemplary Corporate Governance

The company emphasizes transparency and process regulation, avoids external financial capital, and values employee input through a suggestion system and an »open-door« policy for management accessibility.

Suppliers

Partners are expected to provide high-quality services and behave honestly and ethically. When selecting and evaluating suppliers, we also monitor their emissions of harmful substances.

Data Protection

The company ensures personal data is stored lawfully, fairly, and confidentially, with mutual non-disclosure agreements with suppliers and customers. In 2024, there were no data leakage or misuse incidents.



HAFNER factory
Halászi, Hungary

A CASE STUDY – CUSTOMIZED VALVE SOLUTIONS

Our core focus is delivering valve solutions precisely tailored to our customers' needs. Whether for large-scale projects or smaller orders, we are dedicated to being your development partner. In addition to customized solutions, we also excel with standardized solutions that we develop together with our customers.

A major German paper mill manufacturer

Our collaboration with a major German machine-building company specializing in paper mills highlights the significant benefits of strategic development cooperation with us. Through our joint standardization project for pneumatic control cabinets, we achieved significant benefits for the company:

Reduced Delivery Times

Streamlined processes lead to faster turnaround and delivery.

Lower Process Costs

Centralized solutions eliminate the need for separate component sourcing and additional cabinet assembly services.

Private Labelling

Full product and component labelling ensures a secure spare parts business.

Global Distribution

Products are shipped worldwide from HAFNER, ensuring global reach and efficiency.

Local Content

Valve terminal can be integrated locally by HAFNER partners, increasing local content and reducing logistical complexities.

Cost Savings

Overall cost reduction through optimized processes and standardization.

By upgrading to a new, advanced control cabinet design, we provide our customers with numerous benefits. This innovative design integrates all pneumatic ports into the manifold plate, positioning them to face outward. This offers a range of advantages:

Integrated Electric Connections

No need for a separate electric box in the cabinet as there are no pneumatic connections inside.

Easy Valve Replacement

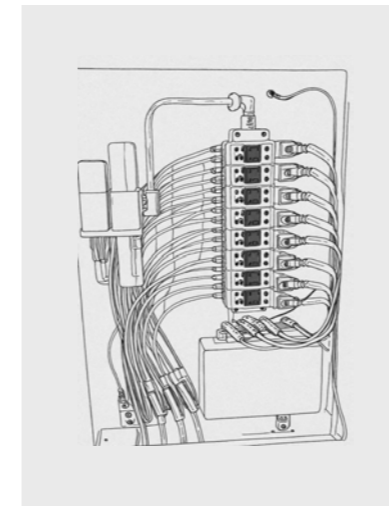
Each valve features an individual shut-off screw, allowing for quick and easy replacement without interrupting the operation of other valves.

Reduced Installation Effort

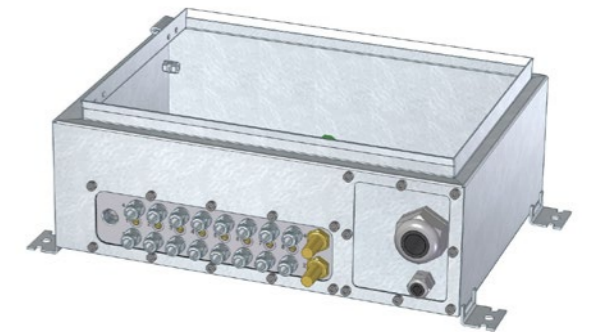
The new design eliminates the need for additional fittings and tubing inside the box, streamlining the installation process.

Minimized Leak Risk

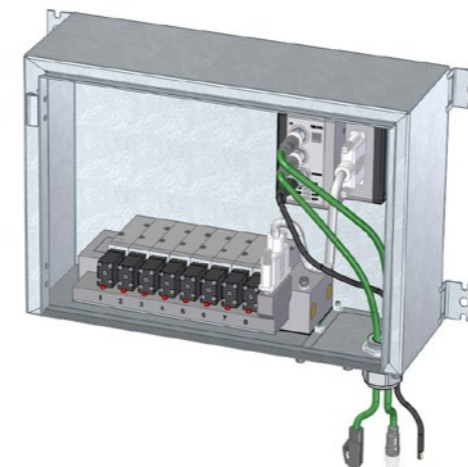
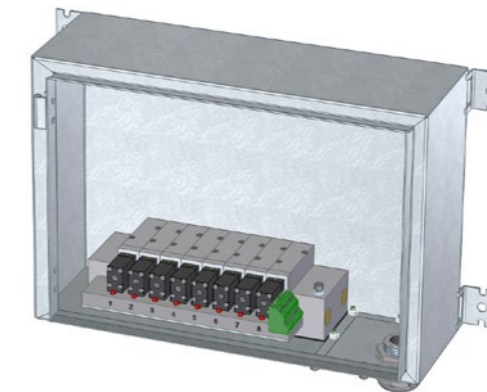
With no pneumatic connections inside the cabinet, the risk of leakages is significantly reduced.



The **old competitor** solution included fittings, tubes, and a separate electric box within the control cabinet.



The **HAFNER solution** features a manifold plate with all connections located on the bottom. This eliminates the need for a separate electric box, as well as additional fittings and hoses within the control cabinet.



Our commitment to **continuous improvement** means we don't stop at initial projects. We are dedicated to ongoing development, such as integrating advanced technologies like **PROFINET communication** into control cabinets, further enhancing their functionality and efficiency.



Where precision meets performance

MACHINE ENGINEERING AND INDUSTRIAL AUTOMATION

Compact and tailored to your needs

Our valves are esteemed by machine builders worldwide for their compact, rugged design. Our extensive catalogue ensures you find the ideal product for your needs. Additionally, our experienced engineering team is dedicated to developing customized solutions. The modular design of our valves allows us to adapt catalogue products with minimal modifications, keeping custom solutions competitively priced.

Why choose our valves?

Custom Valve Solutions

Tailored to your specifications, even for smaller quantities.

Exceptional Durability

Long-lasting performance with our unique HAFNER sealing system.

High IP Protection

Valves with protection up to IP67.

High Flow Capacity

Valves handling flows up to 6,000 NI/min.

Industry 4.0 Ready

I/O-Link compatible valve terminals for advanced automation.

Advanced Connectivity

Valve terminals with fieldbus and Industrial Ethernet interfaces.

Complete Control Panels

Integrated solutions to meet all your automation needs.

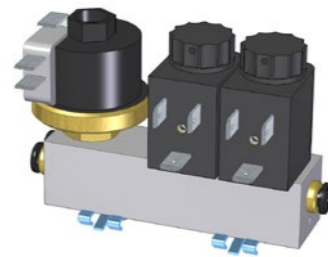
Standardization

Valves for machine builders, labelled with their logo, type number, and other specifications.



Valve with flow-control banjo screw

Direct-acting 3/2-way solenoid valve used in pumping systems for artificial snowmaking. Port 2 features a flow control banjo screw, available in either G 1/8" or G 1/4".



Valve block with integrated pressure switch

This valve block with an integrated pressure switch is designed for professional laundry presses. It features two virtually leak-proof interconnected valves and a pressure switch in a single, compact unit. Quick installation is ensured with clamp mounts, allowing for easy attachment in seconds, while push-in cartridges eliminate the need for screw fittings.



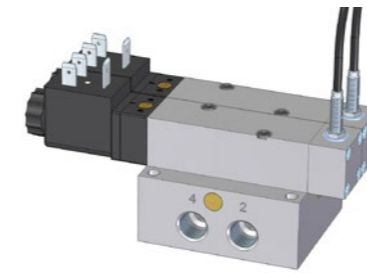
Ready-to-install valve assembly with 2 x 2/2-way valves

This pre-assembled valve module is designed for disinfectors and utilizes direct-acting 2/2-way valves. It manages both the opening and closing of doors, as well as the inflation of door seals. By ordering this ready-to-install assembly group, the customer benefits from simplified management and integration, streamlining the assembly process.



Valve block for low-pressure and vacuum use

Low-pressure and vacuum-capable direct-acting solenoid valves as multi-valve systems for a manufacturer of cosmetic and beauty products. These valve blocks are used in a »bodystyler« device, featuring 16 valves in a single block. The challenge was to design a valve block that fits within the specified installation space while maximizing the orifice size diameter.



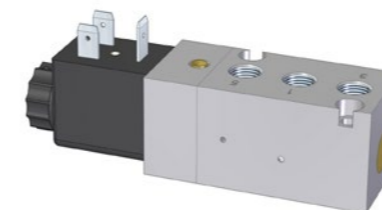
Redundant valve block

These redundant 5/2-way valves commonly used for press control feature electronic position monitoring. To open the air passage, both valves must be activated. If one valve fails, the system automatically exhausts. Inductive sensors provide continuous monitoring of the valve positions.



Double 3/2-way manually operated valve with safety button

Double 3/2-way valve for vacuum lifting devices featuring a safety button. It has two different pressure connections and a common exhaust. The valve is operated by pulling and pushing. To prevent accidental activation, the valve includes a safety mechanism: the white button must be pressed before the black actuator can be pulled.




Valve with customized interface

Valve designed with a customized flange interface. Not all actuators use standardized interfaces, and some customers prefer a smaller size than those specified by NAMUR or ISO. We have been supplying these valves for many years to a manufacturer of coaxial valves. Soon, these valves will also venture into space, being used on European rockets.



Bistable valve with plunger and air operation

This bistable pneumatic valve is designed for actuating collets on a rotary indexer in can body production. It can be operated through the two pilot ports on the top and can also be mechanically actuated from one side using a stem. It features precise height tolerances, with the pilot ports controlled by a rotary switching mechanism that uses an air pulse during rotation.



The right accessory valve for every process control need.

PROCESS VALVE AUTOMATION

Accessories for smart valve automation

We offer a distinctive range of smart valve automation solutions specifically designed for process valves. From 3/2-way and 5/2-way NAMUR valves for standard on-off applications to an extensive array of devices for specialized control tasks, our products are engineered to meet diverse automation needs with precision and reliability.

Why choose our valves?

Exhaust Air Recirculation

Standard in all 3/2-way NAMUR valves for optimal protection of actuator chambers.

NAMUR Interfaces

Available in NAMUR 1 and NAMUR 2.

Fail-Safe Solutions

Ensures dependable performance under all conditions.

Accessory Valves for Positioners

Includes options for quick-exhaust, fail-safe, tank-control and positioner override.

Low Power Solenoid Systems

Coils with ≤ 2 Watt power consumption are ideal for ASI bus systems, as no additional electric connection cable is required.

High Flow Capacity

Delivered in a compact and space-saving design.

SIL3 and Explosion-Proof Products

Compliant with stringent safety and explosion-proof standards.

Harsh Environment Suitability

Functions in temperatures as low as -50°C , available in 316L stainless steel or with seawater-resistant Ematal coating.

Brass-Free Versions

For aggressive atmospheres, such as ammonia, or when strict lead reduction is required.

Fully Encapsulated Coils

Provides IP67 protection against dust and water ingress.

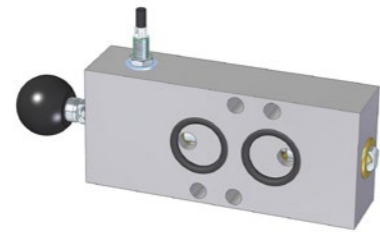
Customizable Valves

Available with your logo and fully assembled »ready-to-use«.



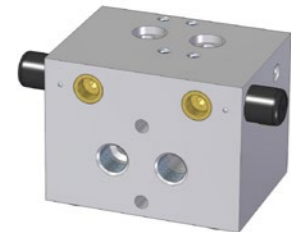
Flow regulator plate

Flow regulator plates provide exceptional precision in controlling the speed of both single- and double-acting actuators. They are available with either a knob or screwdriver adjustment screw. Flow regulator plates are also the only option to independently regulate the opening and closing speeds of single-acting actuators.



Block- and vent valves with optional position feedback sensor

Valves that either keep an actuator in position by blocking all ports (block-and-block) or exhaust both actuator chambers (block-and-vent). The blocked or exhausted position can be secured with a padlock. Optionally, the valve can be equipped with an inductive sensor to provide position feedback to the PLC.



Control block for inflatable butterfly valve seats

This control block enables purely pneumatic control of butterfly valves with inflatable valve seats. It allows the time delay for inflating and deflating the valve seat to be adjusted between 0 and 2 seconds. This solution is purely pneumatic, making it both easy to use and cost-effective.



Bypass valve

This 6/2-way valve is versatile for various control tasks, including quick-exhaust functions in combination with positioners, fail-safe control of double-acting actuators with an external air tank, and implementing redundant circuits for selecting between two air sources.



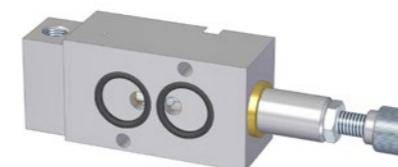
Quick-exhaust block

The quick-exhaust block, available with NAMUR 1 and NAMUR 2 interfaces, provides exceptionally fast exhaust rates of up to 3,000 NI/min, enabling rapid closing functions for spring-return actuators. It features a NAMUR interface for assembling the pilot valve and a threaded port for external piping.



Cylinder-valve combination plate

Cylinder-valve combination plates facilitate the easy and quick assembly of NAMUR valves onto linear or scotch-yoke actuators. This system offers several benefits: it simplifies valve replacement, allows for the addition of NAMUR accessories, ensures fast actuator switching times, and minimizes air consumption. Additionally, the reduced installation effort translates to lower overall costs, making it a more economical choice.



Lock-up valve

The lock-up valve is designed to trap air inside the actuator or exhaust the actuator as soon as the pressure falls below the preset value. The opening and closing pressure of the valve is adjustable via a setting screw. The valve can be directly mounted on the actuator using the NAMUR interface and connected to the positioner via threaded ports on the front.




3-position valve with fail-safe

This 3-position valve for double-acting actuators allows the actuator to be opened, closed, or held in intermediate positions. In the fail-safe scenario, where no power is available but a minimum pressure of 3 bar is maintained, the valve pressurizes one of the actuator chambers, allowing it to move to the fail-safe position.

COMMERCIAL VEHICLES

Tough valves for commercial vehicles: Because durability counts.

Our valves are widely used in commercial vehicle applications. Whether you need push-pull valves for bottom-loading systems or valves to control complex axle lift systems, we offer a broad range of proven solutions. Our valves are designed to withstand harsh global road conditions, featuring vibration-tested durability and operation down to -50°C .



Conquer the rough roads:
Valves built for extreme
durability and temperature.

Why choose our valves?

Extreme Temperatures

Reliable operation in temperatures as low as -50°C and as high as $+120^{\circ}\text{C}$.

Vibration Tested

Certified to DIN EN 61373 standards for vibration resistance (railway standard).

Robust Design

Engineered to withstand the demanding conditions of commercial vehicles.

High Flow Capacity

Achieved in a compact, space-saving design.

Superior Sealing Performance

Ensures high efficiency even at low pressures.

Solenoid valves run by battery

Includes options for 6VDC applications.

IP 67 Rated Solenoid Valves

Provides excellent protection against dust and water ingress.



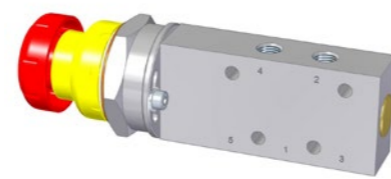
Manually operated valve with pneumatic reset

With their compact design, interchangeability, and customized manifold system, our BHP valves are ideal for bottom loading systems and PTO (power take-off) applications. They feature an additional pneumatic reset connection, which serves as a safety feature to ensure the refuelling valve closes properly after use. Additionally, various button colours are available.



Pneumatic locking device

This Guardbar interlock valve is designed to pneumatically secure the guard bar, restricting access to the system's discharge valves except during loading or unloading. It can also prevent vehicle movement by interlocking with the brakes during these operations. The body of the valve features a custom-specific geometry tailored to customer requirements.



Ex-proof valves for hydrogen trailers

Panel mounting valves designed for hydrogen transport trailers feature an explosion-proof design suitable for zones 1, 2, 21, and 22, and operate within -40°C to $+65^{\circ}\text{C}$. They are robustly built to withstand harsh conditions and are available with various actuators to meet different operational requirements.



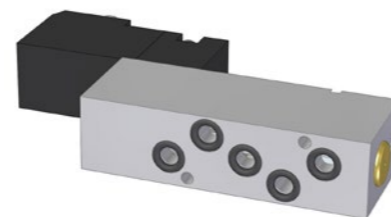
Ready-to-use assembly group

This assembly comes ready-to-install, featuring 8 pneumatic valves mounted on a manifold plate complete with fittings and tubing. It operates within a temperature range of -20°C to $+65^{\circ}\text{C}$ and is ATEX-certified for zone 2, making it suitable for use in hydrogen environments.



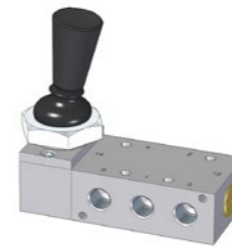
Push-pull valve with pneumatic reset

Manually operated 3/2-way push-pull valve with an additional pneumatic reset port.



High-temperature solenoid valve

Valves used in sweepers often need to withstand high temperatures. For this purpose, we offer 5/2-way solenoid valves that can operate at temperatures up to $+80^{\circ}\text{C}$ with a low power consumption of just 2 watts. For even higher temperatures, up to $+120^{\circ}\text{C}$, we provide pneumatically actuated valves. Valves are designed for manifold assembly, with all ports located in the manifold plate, making replacement quick and easy.



Ergonomic hand-lever valve

This 5/2-way hand-lever valve is modified for use in refuse collection vehicles to operate double-acting actuators. It features a nut for panel mounting, a rubber gaiter, and an ergonomic lever.



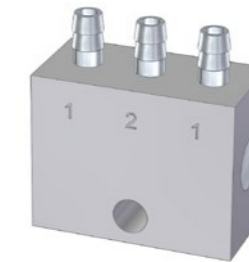
CANopen valve terminal

Our valve terminal series includes industrial Ethernet and fieldbus connections, such as CANopen. It is particularly well-suited for commercial vehicle applications due to its robust aluminum construction and high protection rating of IP 55.



Actuator with air release function

Customized pneumatic actuator designed for a fifth wheel coupling manufacturer. This actuator features an air release function and is specifically tailored for use with terminal tractors.



OR-valve with barbed fittings

Customized OR-valve with integrated barbed fittings. End-cap and fittings made of stainless steel. Operating Range from -50°C to $+50^{\circ}\text{C}$.

RAIL VEHICLES

Decades of reliable performance in challenging outdoor conditions

Our valves are highly valued in the rail industry for their robust construction and exceptional performance in extreme conditions, including temperatures as low as -50°C . Whether it's for train door controls, couplings, or wagon construction, we offer the perfect solution for your needs.

Rough conditions, smooth performance: HAFNER valves for rail applications.

Why choose our valves?

Railway approved Solenoid Systems

Designed to operate with rail-specific voltages 24VDC and 110VDC and a voltage tolerance of $\pm 30\%$.

Extreme Temperatures

Reliable operation in ambient temperatures down to -50°C .

Vibration Tested

Certified to DIN EN 61373 standards for vibration resistance.

Fire Safety Certified

Solenoid systems meet DIN EN 45545-2 fire protection standards.

Durable Construction

Engineered for rugged performance in demanding environments.

High Flow Capacity in a Compact Design

Delivers high flow rates while maintaining a compact footprint.

Superior Sealing Performance

Ensures maximum sealing efficiency even at low pressures.

IP67 Protection

Solenoid valves with high protection against dust and water ingress.



Integrated electric switch

Panel mounting valve with emergency stop button and electric switch. The electric switch activates as soon as the emergency stop button is engaged. Developed for a work train application.



Double roller lever valve

Two 3/2-way roller valves in a single compact body, featuring a customized flange interface for seamless system integration.



Precise flow regulation

This flow regulator features a slotted spindle design, ensuring very precise flow control across the entire regulation range. This design allows for meticulous adjustments, making it ideal for applications requiring high accuracy. It is commonly used in pantographs.



Roller-stem valve

Roller-stem valve for automatic train couplings. Designed for a temperature range of -40°C to $+60^{\circ}\text{C}$.



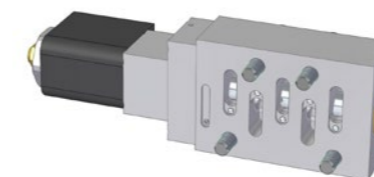
Double solenoid valve +/- 30%

Bistable solenoid valve for automatic train couplings, equipped with a railway solenoid system featuring a voltage tolerance of +/- 30%, compliant with fire safety standard DIN EN 45545-2.



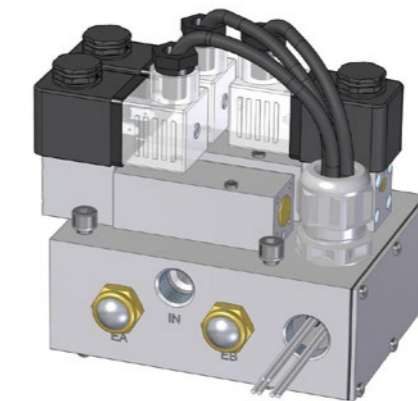
Roller-stem valve with electrical override

This roller plunger valve is designed for automatic train couplings and can be electrically overridden via the solenoid when necessary. It is used during towing operations when two incompatible couplings meet.



ISO1 valve for -40°C

5/2-way solenoid valve with ISO1 interface according to ISO 5599-1. Also available as a pneumatically piloted version.




Integrated valve-block including wiring

This customized valve block is designed for controlling the automatic articular joint in trams. It features a 5/2-way spring-return valve and a 5/3-way center-exhausted valve. With all valve ports integrated into the plate, it allows for easy and quick replacement in the field, ensuring efficient maintenance and minimal downtime.

OFFSHORE/MARINE

Ensuring performance even in harsh seas

In the shipbuilding and offshore industries, equipment must endure harsh conditions, which is why we offer robust and reliable valve solutions designed for these environments. Our valves are used in various applications, such as ballast water treatment systems on ships and on oil platforms to pilot hydraulic valves.



Engineered for
excellence in extreme
conditions

Why choose our valves?

»Heavy Metal« Series

Constructed from 316L stainless steel, these valves offer exceptional durability and corrosion resistance, perfect for the toughest marine and offshore environments.

»Salt & Valves« Series

Crafted from high-quality aluminum alloy with an Ematal coating, providing superior corrosion protection to meet C5-M standards.

Extreme Temperature

Operates flawlessly at temperatures as low as -50°C .

Redundant Manifold Solutions

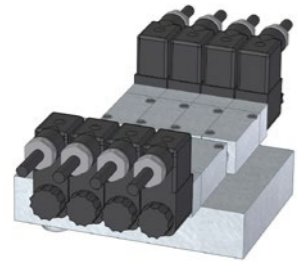
Enhances system reliability and safety with built-in redundancy.

Explosion-proof products

Compliant with safety regulations for explosive hazardous atmospheres. Available in Ex ec up to Ex d ratings. Meets ATEX, IECEx, CCC, UKCA, and CSA/FM standards.

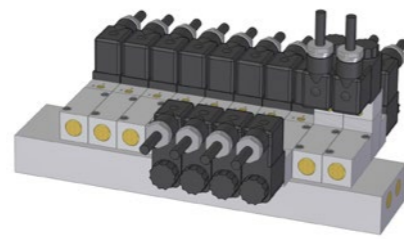
SIL III Certified

Guarantees high safety standards and operational reliability.



Redundant Manifold

Manifold block with 3/2-way double solenoid valves. Each pair of valves is redundantly connected through the manifold, ensuring reliable operation. Made from durable 316L stainless steel and equipped with Ex m solenoid coils, this system is built to last. All valve connections are in the manifold for quick and easy replacement during maintenance. Valve block is used to pilot hydraulic valves.



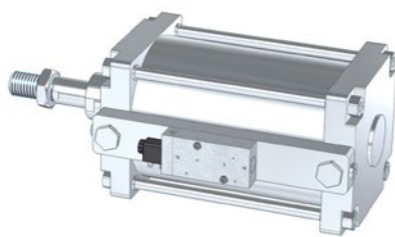
Redundant Solenoids

Manifold block equipped with both spring-return and double solenoid 3/2-way valves. The two front valves are equipped with double solenoids to increase the availability and thus the safety of the system.



Redundant Valve Setup

The task for this product was to replace the existing 3/2-way valve blocks in ship control cabinets with redundant 3/2-way valves (both must be energized). Space was limited. The solution: a stackable design featuring an intermediate plate that connects the valves and ensures collected venting.

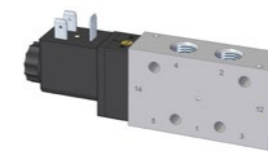


Cylinder-Valve-Combination

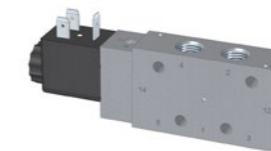
Cylinder-valve combination plate crafted from 316L stainless steel, mounted on a double-acting ISO 15552 cylinder with a NAMUR 2 (G 1/2") interface and a corresponding NAMUR valve, also in stainless steel.

Different materials and surface treatments

Our valves come in various configurations to meet your needs. Choose from our anodized options or the »Salt & Valves« series, where aluminum valves are enhanced with the Ematal anodization and stainless steel components. The Ematal valves are also C5-M tested for durability in harsh environments. Additionally, we offer the »HAFNER Heavy Metal« series, featuring valves made entirely from robust 316L stainless steel for maximum strength and corrosion resistance.



**Standard
Aluminum anodized**



**Series
»Salt & Valves«**



**Series
»HAFNER Heavy Metal«**

Body	Aluminum	Aluminum	Stainless steel
Pilot-head	PA	Aluminum	Stainless steel
Surface	Anodized	Ematal anodized	Machined
Other parts to the outside	Brass	Stainless steel	Stainless steel
Inner parts	Stainless steel, brass, POM, NBR	Stainless steel, POM, PUR/FKM	Stainless steel, PUR/FKM



PULP AND PAPER INDUSTRY

From stock preparation to winder section with individual valves and control cabinets

In the demanding pulp and paper industry, equipment must endure extreme heat and dirt while maintaining reliable performance. We provide robust solutions with high IP-rated devices for harsh conditions. Our range includes IP67 high-temperature valves and innovative components to prepare your paper mill for Industry 4.0.

Optimizing paper production with innovative pneumatic solutions.

Why choose our valves?

Manifold Plates with Individual Shut-Off Screws

The air supply to each solenoid valve can be shut off individually. This enables quick and easy replacement during operation.

Temperature Range Up to +120°C

Ensures reliable performance in high-heat environments.

Durable Design

Engineered to withstand the demanding conditions typical in the paper industry.

Solenoid Valves with IP67 Protection

Offers exceptional resistance to dust and water ingress.

Solenoid Coils with M12 Connection

Guarantees secure and straightforward installation.

Ready-to-Use Control Cabinets

Pre-assembled and ready for immediate deployment, streamlining setup and integration.

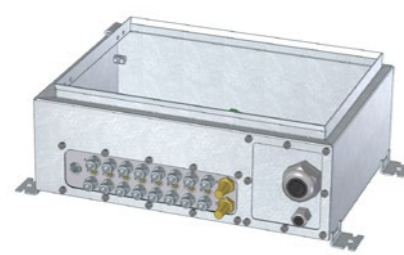
Position Feedback

Facilitates precise monitoring of the valve position, which is especially crucial for safety-relevant applications with SIL ratings.



Solenoid valve cabinet

This control cabinet features 8 x 5/2-way solenoid valves. All pneumatic connections are located outside the cabinet on the underside of the manifold plate. This setup offers several advantages, including no need for tubes and fittings inside the cabinet, which



Air distributor cabinet

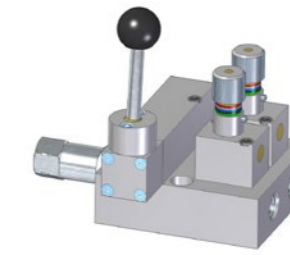
Our air distributor control cabinet includes a main shut-off valve, a pressure regulator, a pressure gauge and 12 outlet ports for air distribution. Each port can be individually closed using the shut-off screws inside the cabinet.

leads to reduced installation effort, less risk of leaks, and the elimination of a separate electrical connection box.



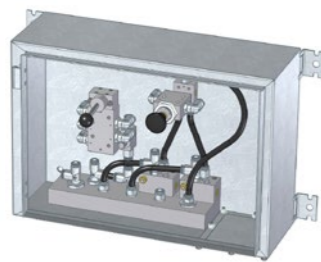
Lockable hand-lever valve with optional position feedback sensor

The lockable 5/2-way hand lever valve is designed to ensure personnel safety during maintenance or replacement of scraper blades. It features an extended spool that can be locked in place with a padlock. Suitable for ambient temperatures up to +120°C, this valve also includes an inductive sensor for position feedback.



Ready-to-use assembly group

This block comprises two flow control valves, a lockable 5/2-way hand lever valve, and a non-return fitting. It is specifically designed for lifting the scraper blade frame and can operate in ambient temperatures up to +120°C.



Sample-taking cabinet

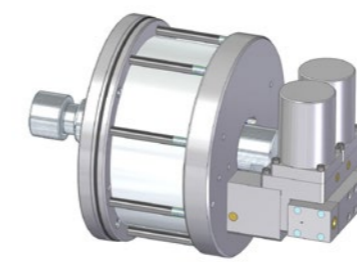
The sample-taking control cabinet is designed to operate sampling valves. Samples can be collected using the hand lever on the cabinet door, and are automatically blown out with air after a predefined period. Additional air pulses can be activated at any time using the push-button valve.



G 3/4" Flow regulators

Our G 3/4" block form flow regulators are designed specifically for ropeless paper transport systems and can handle flow rates of up to 6,000 NI/min. They include easily readable coloured rings for flow settings and offer a nearly linear flow curve, enabling precise adjustments even at high flow rates.

Featuring manifold mounting plates, they streamline installation and minimize piping requirements. Additionally, these regulators are suitable for use in ambient temperatures up to +120°C.



Double-acting actuator with oscillating module

This double-acting pneumatic actuator is designed to continuously move scraper blades back and forth on the rollers. Automatic switching occurs at the end of the piston rod stroke through the oscillating module. The oscillating speed is adjustable via an integrated flow control valve. The actuator

features a protective cover, making it suitable for use in wet areas. It has a piston diameter of 160 mm, a stroke length of 16 mm, and operates within a temperature range of up to +110°C.

CONTACT

International Sales Office

HAFNER Pneumatik Krämer GmbH & Co. KG

Stammheimer Straße 10
70806 Kornwestheim
Germany

Tel. +49 7154 178 589 0
Fax +49 7154 178 589 28
info@hafner-pneumatik.de
www.hafner-pneumatik.com

Factory

HAFNER Pneumatika Kft.

9228 Halászi, Püski út 3.
Hungary

Tel. +36 96 573 012
Fax +36 96 210 601
ertekesites@hafner-pneumatika.com
www.hafner-pneumatika.com

